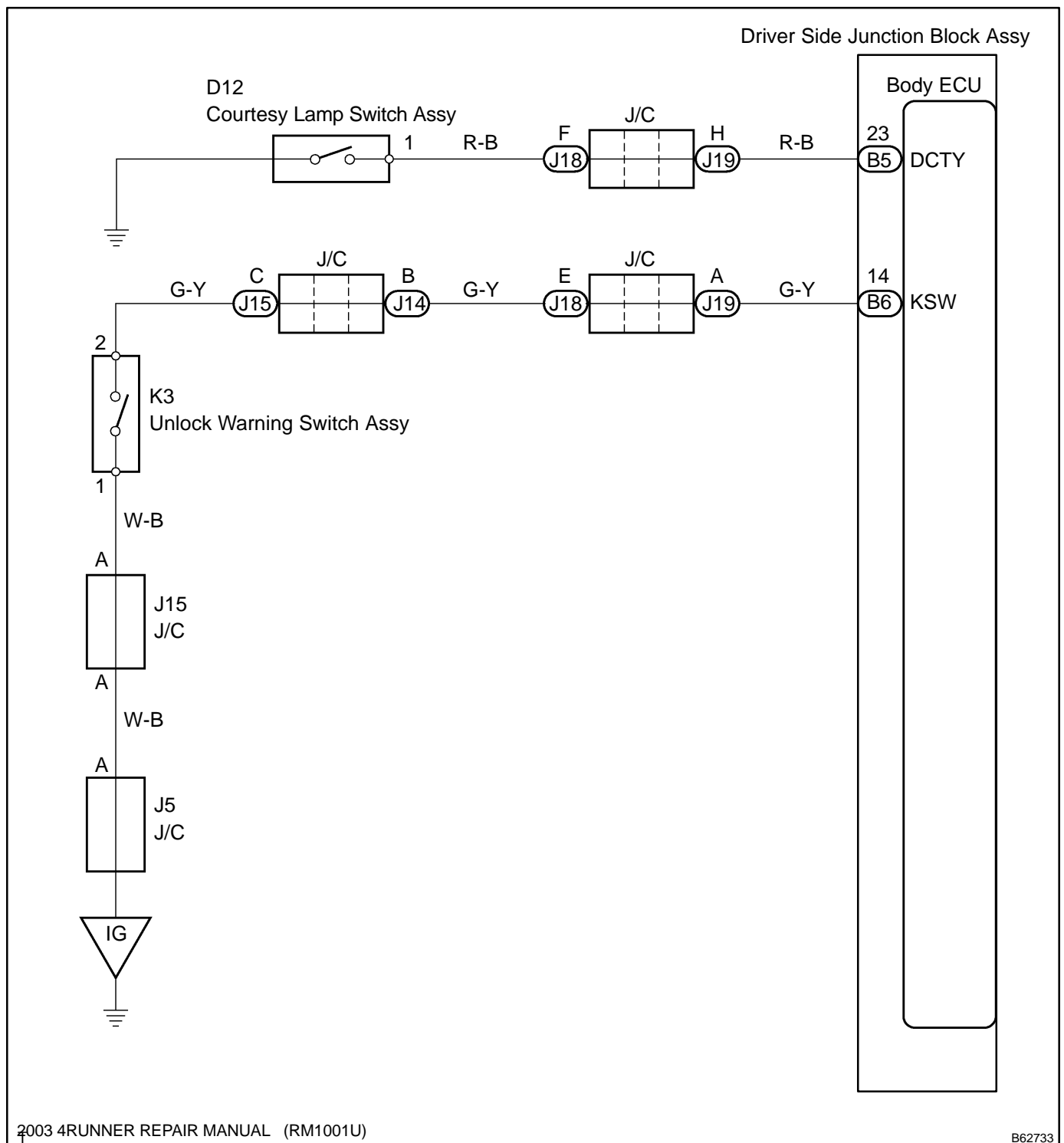


## KEY LOCK-IN PREVENTION FUNCTION DOES NOT WORK PROPERLY (MANUAL OPERATION AND OPERATION INTERLOCKED WITH KEY ARE ACTIVE)

### CIRCUIT DESCRIPTION

The un-lock warning switch turns ON when the key is inserted in the ignition key cylinder. The courtesy lamp switch turns ON when the driver side door is opened. These 2 switches are monitored by the body ECU. In order to prevent the key from being locked in, the body ECU controls door locking operation according to conditions of these switches, so tat doors are not locked.

### WIRING DIAGRAM



## INSPECTION PROCEDURE

### 1 READ VALUE OF HAND-HELD TESTER

- (a) Using the hand-held tester, check that the un-lock warning switch signal is output when the switch is operated.

**Standard (Body ECU (Switch condition)):**

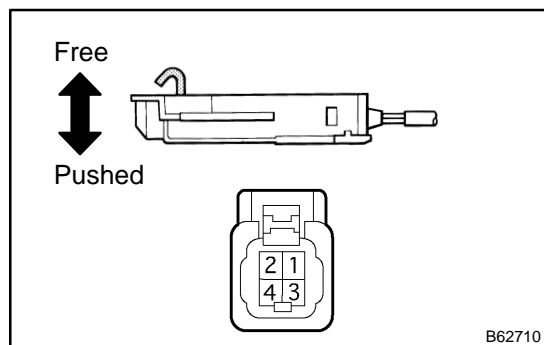
Item	Measurement Item/ Display (Range)	Normal Condition	Diagnostic Note
KEY UNLK WRN SW	Key un-lock warning SW signal/ON or OFF	ON: Key is in ignition key cylinder OFF: Key is not in ignition key cylinder	-

**OK**

**Go to step 4**

**NG**

### 2 INSPECT UN-LOCK WARNING SWITCH ASSY



- (a) Remove the un-lock warning switch.  
(b) Inspect the un-lock warning switch continuity.

**Standard:**

Terminal No.	Condition	Specified Condition
1 ↔ 2	Free	No continuity
	Pushed	Continuity

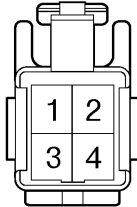
**NG**

**REPLACE UN-LOCK WARNING SWITCH ASSY**

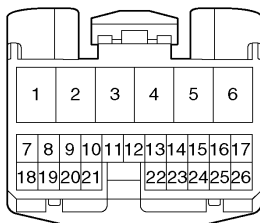
**OK**

**3****CHECK WIRE HARNESS (UN-LOCK WARNING SWITCH ASSY ⇔ DRIVER SIDE JUNCTION BLOCK ASSY (BODY ECU))****Wire Harness Side**

K3  
Unlock Warning Switch



B6  
Body ECU



B65425

- (a) Disconnect the K3 un-lock warning switch and B12 body ECU connectors.
- (b) Check the continuity between the terminals of the un-lock warning switch (K3) and body ECU (B6) connectors.

**Standard (Check for open) :**

Symbols (Terminal No.)	Specified Condition
- (K3-2) ⇔ KSW (B6-14)	Continuity
- (K3-1) ⇔ Body ground	

**NG****REPAIR OR REPLACE HARNESS AND CONNECTOR****OK****REPLACE INSTRUMENT PANEL JUNCTION BLOCK ASSY****4****READ VALUE OF HAND-HELD TESTER**

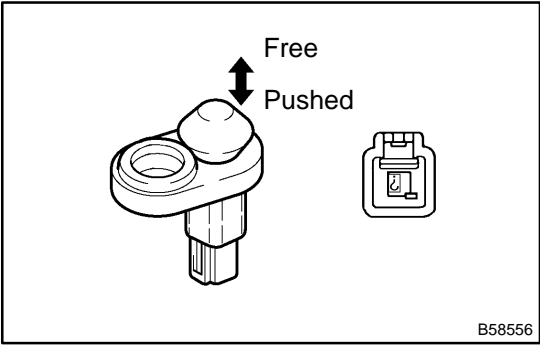
- (a) Using the hand-held tester, check that the driver door courtesy switch signal is output when the switch is operated.

**Standard (Body ECU (Switch condition)):**

Item	Measurement Item/ Display (Range)	Normal Condition	Diagnostic Note
D DOR CTY SW	Driver door courtesy SW signal/ON or OFF	ON: Driver door is open OFF: Driver door is closed	-

**OK****REPLACE COURTESY LAMP SWITCH****NG**

5 INSPECT COURTESY LAMP SWITCH



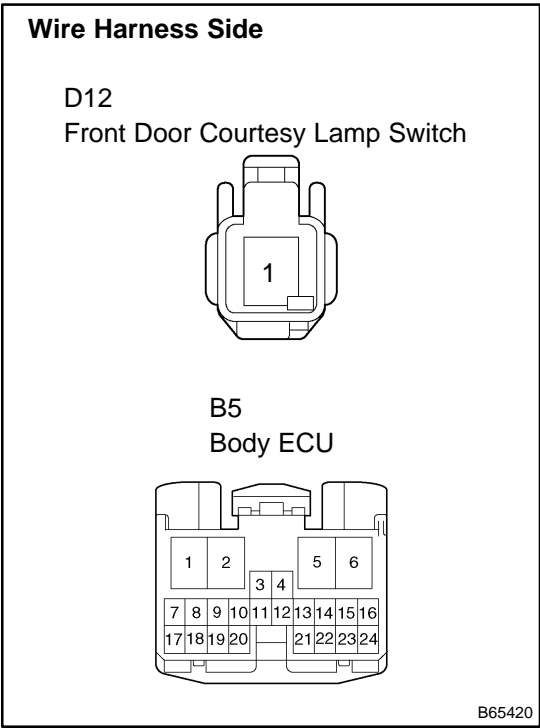
- (a) Remove the courtesy lamp switch.
  - (b) Inspect the courtesy lamp switch continuity.
- Standard:**

Terminal No.	Condition	Specified Condition
1 ⇔ Body ground	Free	Continuity
	Pushed	No continuity

NG REPAIR OR REPLACE HARNESS AND CONNECTOR

OK

6 CHECK WIRE HARNESS



- (a) Disconnect the courtesy lamp switch and body ECU connectors.
  - (b) Check the continuity between the terminals of the courtesy lamp switch (D12) and body ECU (B5) connectors.
- Standard (Check for open) :**

Symbols (Terminal No.)	Specified Condition
- (D12-1) ⇔ DCTY (B5-23)	Continuity

NG REPAIR OR REPLACE HARNESS AND CONNECTOR

OK

REPLACE INSTRUMENT PANEL JUNCTION BLOCK ASSY